

Our expertise

Airline lashing tracks and cargo securing nets



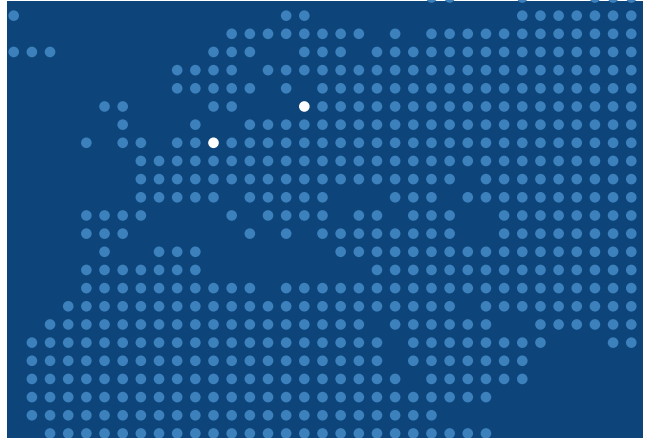
German Engineered.
Global Presence. Top Safety.

- Since 1986

Why our customers choose WISTRA

Development & production

As we have our own R&D and QA departments, we are the right partner for you when it comes to custom products. Depending on the requirements for the item, we produce at fair market conditions at our own production sites in Germany, Lithuania and China. We can draw on decades of production expertise in manufacturing our goods.

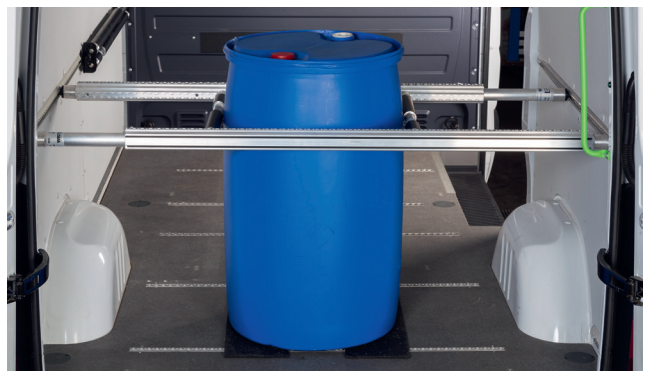


Quality

All products from the WISTRA range undergo strict safety tests. Our quality management forms the basis for ensuring our consistently high quality. Most products in our range are exposed to extraordinarily high and continuous stress. The materials we use have therefore always had to pass a long series of tests. Our products are marked on the basis of VDI 2700ff and DIN EN 12195-2.

Full range supplier

Our diverse production options provide not only an individual product but also all the corresponding components. In addition to airline lashing tracks, we supply the matching shoring beams, lashing straps and much more. Simply get in touch with us.



Service

Our quality management complies with the standard ISO 9001 and will be recertified by DEKRA in the annual audit. A strong ERP system forms the foundation for optimal customer support.

WISTRA airline lashing track



Configure your airline lashing track with us!

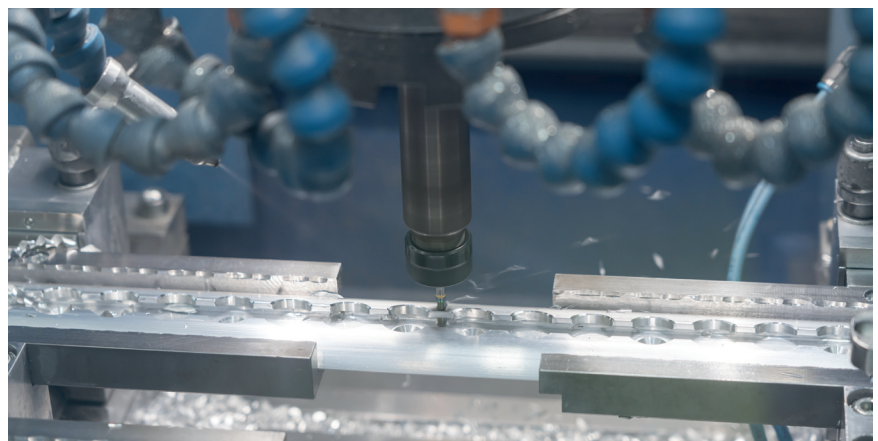
Version

- ✓ Select from different profiles
- ✓ On request up to 6,000 mm
- ✓ Individual fastening holes
- ✓ Additional complex machining

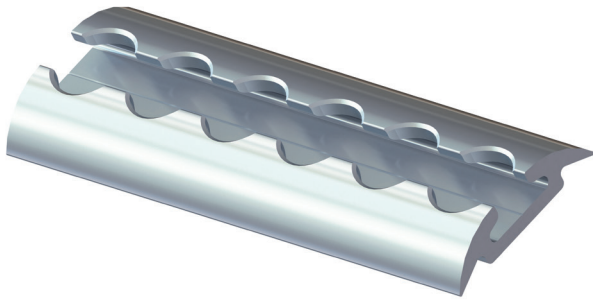


Surface

- ✓ Aluminium untreated
- ✓ Aluminium anodised
- ✓ Aluminium powder-coated



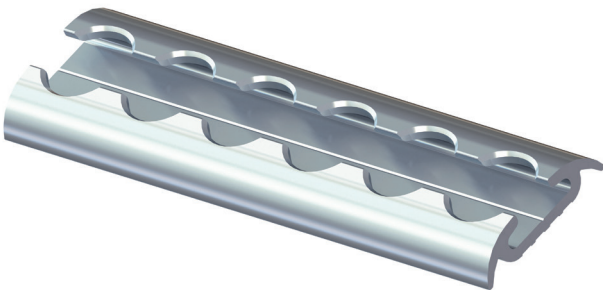
Airline lashing track semi-circular



Technical data

- > semi-circular design
- > track width: 50 mm
- > hole diameter: 20 mm, hole pattern: 25mm
- > length: on request up to 6,000 mm
- > material: aluminium, untreated

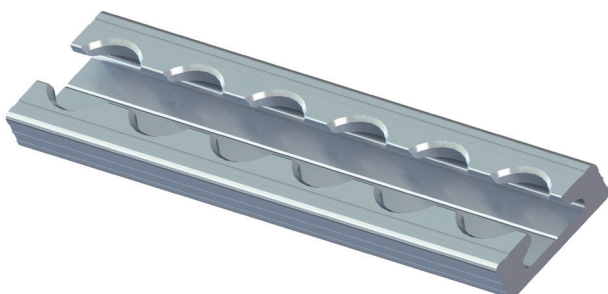
Airline lashing track semi-circular



Technical data

- > semi-circular design
- > track width: 40 mm (slim version)
- > hole diameter: 20 mm, hole pattern: 25 mm
- > length: on request up to 6,000 mm
- > material: aluminium, untreated

Airline lashing track angular



Technical data

- > angular design
- > track width: 34 mm
- > hole diameter: 20 mm, hole pattern: 25mm
- > length: on request up to 6,000 mm
- > material: aluminium, untreated

Airline lashing track pre-assembled

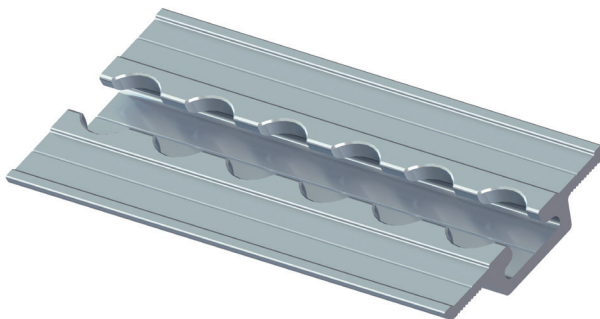


blue colour based on RAL 5002

Technical data

- > track width: 40 mm
- > hole diameter: 20 mm, hole pattern: 25 mm
- > length of lashing track: on request up to 6,000 mm
- > material: aluminium, untreated
- > set with integrated protection and 2 end caps

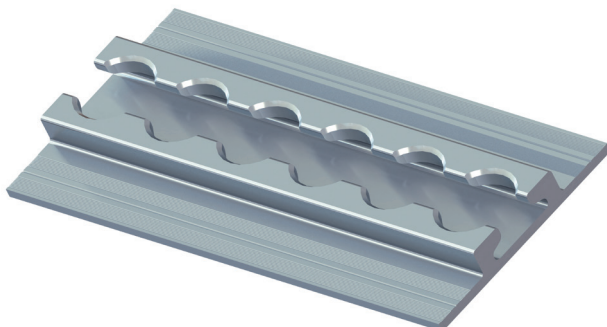
Airline lashing track for floor



Technical data

- > with top wing for integration in the cargo area floor
- > track width: 60 mm
- > hole diameter: 20 mm, hole pattern: 25 mm
- > length: 3,000 mm +1/-5
- > material: aluminium, untreated

Airline lashing track for floor



Technical data

- > with bottom wing for integration in the cargo area floor
- > track width: 65 mm
- > track height: 10 mm
- > hole diameter: 20 mm, hole pattern: 25 mm
- > length: 3,000 mm +1/-5
- > material: aluminium, untreated

LED airline lashing track 5523



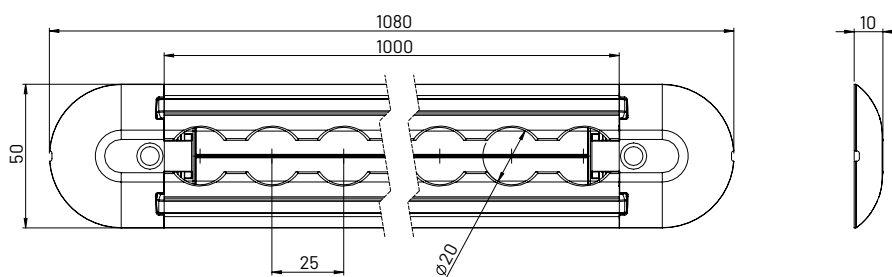
Electrical connection

The connection is made by a 2-core cable with 2 x 0.5 mm² cross-section.



Technical data

- > semi-circular version with 2 integrated LED strips and 2 end caps
- > track width: 50 mm
- > track height: 10 mm
- > hole diameter: 20 mm
- > hole pattern: 25 mm
- > length of lashing track: 1,000 mm +/-5
- > length incl. end caps: 1,080 mm +/-5
- > material: aluminium, untreated
- > nominal voltage: 12V
- > nominal power: 13.8 W (total power 27.6 W)
- > colour temperature: 6,500 K
- > lumen: 870 lm per strip
- > protection class: IP67
- > weight: 565 g



Single airline fitting



Technical data

- > LC (lashing capacity): 500 daN
- > housing made of plastic

Double airline fitting 380



Technical data

- > LC (lashing capacity): 10 kN
- > material: steel, galvanised

Designation	Item number
Double airline fitting, type 380 without ring	140000038000

Quattro airline fitting 383



Technical data

- > LC (lashing capacity): 25 kN
- > material: steel, galvanised

Designation	Item number
Quattro airline fitting type 383	140000038300

Covers



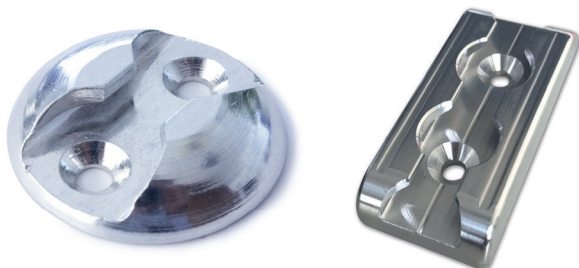
WISTRA AirlineStop



Technical data

- > for profiles up to 50 mm thickness
- > BC (breaking capacity) 400 daN
- > material: steel, galvanised
- > size: 85 mm x 50 mm x 56,5 mm
- > weight: 410g
- > height above the vehicle floor: 49mm
- > centre hole: \varnothing 20 mm for \varnothing 19 mm spigots
- > 4 x 6 mm hole for dowel pins

Airline lashing point



Technical data

- > including 2 mounting holes M5 countersunk head
- > diameter: 45mm
- > material: aluminium, untreated
- > L x W x H 76 mm x 34 mm x 12.5 mm
- > Including 2 mounting holes M6 countersunk head
- > material: aluminium, untreated
- > load capacity: 400 daN
- > weight: approx. 60 g

Wire hooks for airline fitting



Technical data

- > with PVC coating for hanging up cables or clothing
- > carrying capacity: 50 kg

Designation	Item number
Wire hooks type 527 for single airline fitting	140000052700

WISTRA standard nets

QuickKEP net

This vertical transport cargo securing net is based on the four-level net and is used for improved securing of your packages. The standard version has a strap width of 25 mm and the side-mounted aluminium linkage together with the two mounting levels make attaching the net easy as child's play. This cargo securing net is available in versions compatible with the Daimler Sprinter H2 and the VW Crafter. The nets are tested and marked in accordance with VDI guidelines 2700 sheet 3.3. With its weight of 6.8 kg, it enables ergonomic handling. Thanks to the locks installed on the net's upper rows, the net can be opened without detaching the linkage. With the corresponding double-airline fittings, you have the perfect all-inclusive package.



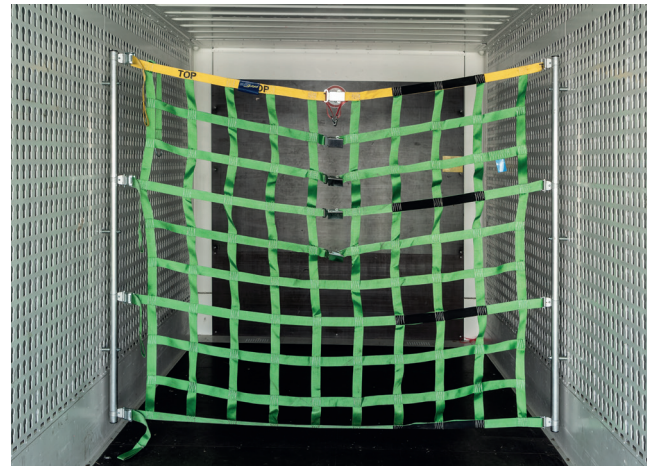
QuickMED

We also have the ideal cargo securing net for small vehicles. With a spring in the side linkage and the hook-in device, you can secure your cargo even in a Jumpy, Transit, Vito or Vivaro. The entire net comes with an LC of 600 daN, making it the ideal securing system. Thanks to QuickMED small, a variant is also available for vehicle models such as Caddy, Berlingo, Doblo, Citan and Combo.



Swap body nets

Our modified swap body net has some interesting new features. With our emergency-release lock, which we developed in-house, you can remove packages without detaching the net. This minimises the pressure on the net and the net does not need to be cut up. The lightweight aluminium tubes have a weight advantage of 8 kg compared to the steel versions. On one side the net is fitted with clamping locks, which improves the tensioning of the net. In addition, we have developed a special new bracket that is attached directly to the linkage. It enables easy handling and straightforward exchange if the net becomes damaged.



Custom nets

We have also developed a diverse range of nets for special purposes to ensure that your goods are transported safely. For example, to secure goods in the overcab storage space in your transporter. We also supply knitted nets and tie-down nets to secure your goods on the floor of your vehicle. The range is supplemented by our Wheel-Net, that you can use to transport your tyres safely from A to B in your car.



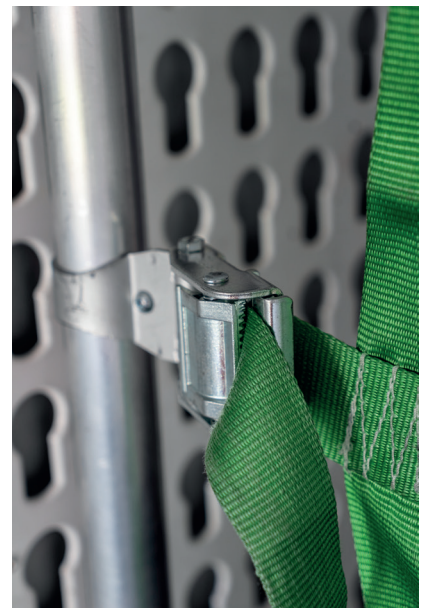
WISTRA special nets



Configure your net with us!

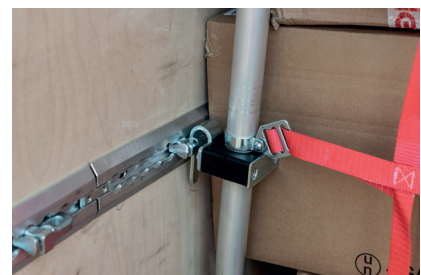
Webbing

- ✓ 25 mm, 35 mm or 50 mm wide
- ✓ External dimension as chosen
- ✓ Logo or lettering can be included
- ✓ Various strap colours
- ✓ Diverse breaking loads
- ✓ Various mesh sizes



Fittings

- ✓ With or without emergency release for easy removal
- ✓ Large number of hooks
- ✓ Ratchets or clamping locks to clamp the net
- ✓ Incl. height adjustment tool
- ✓ End fittings suitable for all track types
- ✓ Side linkage possible for easy insertion



"QuickKEP 2.0" cargo securing net



Technical data

- > vertical transporter cargo securing net
- > strap width: 25 mm
- > strap colour: red
- > with straight alum. linkage on both sides for universal use in H2 chassis
- > 2 mounting levels for hanging up
- > LC net mounting point 250 daN
- > LC net total 600 daN
- > mesh check, production and marking according to VDI guideline 2700 Part 3.3
- > net height: 1,668 mm
- > weight net: approx. 6.8 kg
- > weight fitting 380 total: approx. 1.8 kg
- > bottom hook extended for simple insertion
- > spanner in label protector for adjusting the height for optimised fastening
- > four quick-release fasteners

Side mounting

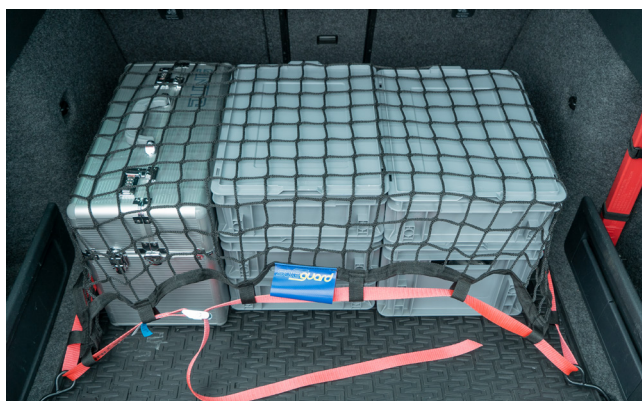
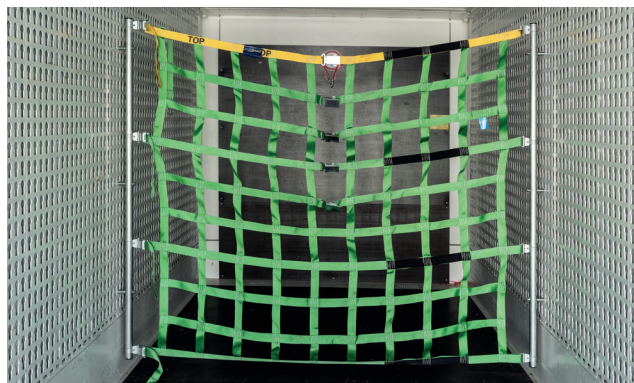
- > WIS hook-in device for double airline fitting 380
- > 16 double airline fittings are already included in the set

Packaged as set for universal use

Designation	Item number
Safeguard cargo securing net QuickKEP	273480002230



WISTRA nets



WISTRA
CARGO CONTROL
THE HEICO COMPANIES

WISTRA GmbH
Cargo Control
An der Trave 11 • 23923 Selmsdorf
Phone: +49 (0) 388 23 / 258-0
Fax: +49 (0) 388 23 / 258-23
E-mail: info@wistra.eu

UAB "Wistra Cargo Control"
Pramones 8
LT-94102, Klaipeda
Tel: +370 61024943
Tel: +370 69565282
E-mail: masiule@wistra.eu

www.wistra.eu



You can also visit us on Facebook:
www.facebook.com/wistra.eu